



GAT MONTHLY MEMBERSHIP PROGRESS REPORT

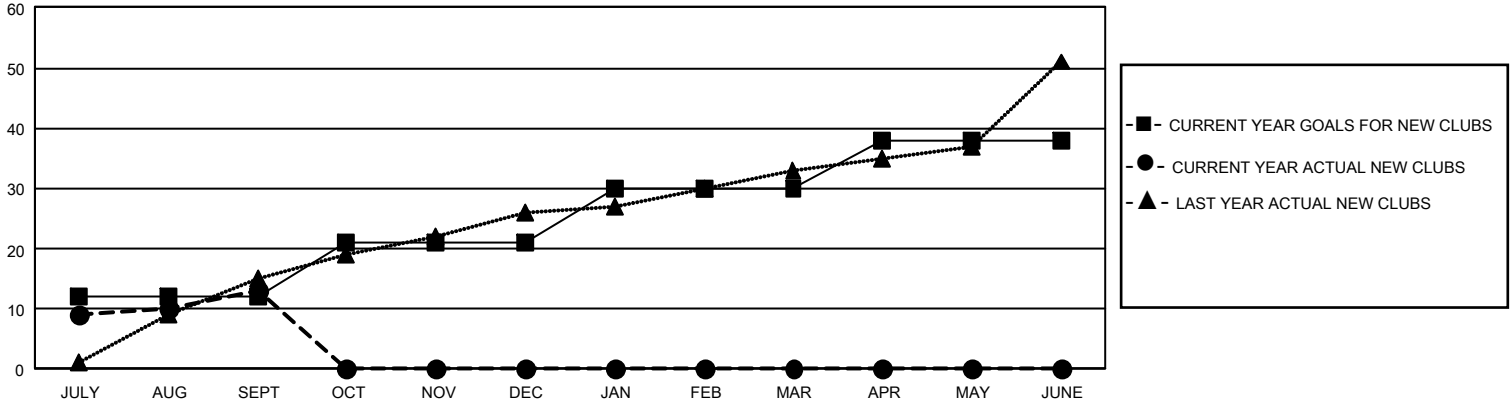
Results as of: 9/30/2022

GMT Constitutional Area 8, Group B

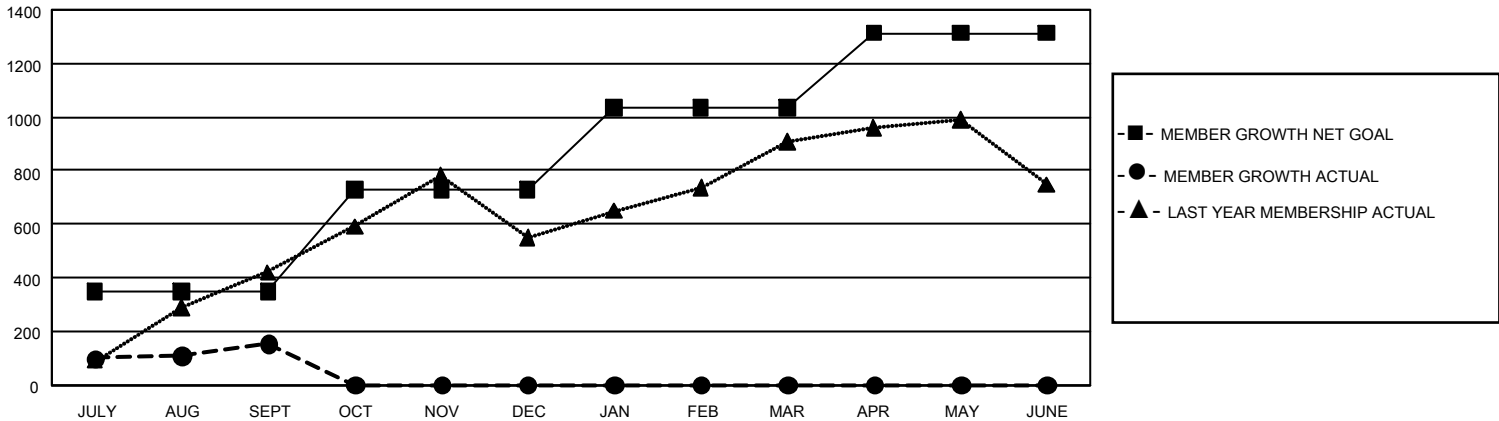
REPORT DOES NOT INCLUDE CLUBS IN UNDISTRICTED AREAS.

Clubs				Members			
RESULTS FOR 2022-2023				RESULTS FOR 2022-2023			
QUARTER	NEW CLUB GOAL	NEW CLUBS	DROPPED CLUBS	QUARTER	MEMBER GROWTH NET GOAL	MEMBER GROWTH ACTUAL	DROPPED MEMBERS ACTUAL (including transfers)
JULY/AUG/SEPT	36	13	8	JULY/AUG/SEPT	350	546	355
OCT/NOV/DEC	27	0	0	OCT/NOV/DEC	380	0	0
JAN/FEB/MAR	27	0	0	JAN/FEB/MAR	305	0	0
APR/MAY/JUNE	24	0	0	APR/MAY/JUNE	278	0	0

GOALS AND ACTUAL NEW CLUBS CUMULATIVE



GOALS AND ACTUAL MEMBERS CUMULATIVE



DROPPED CLUBS: 8 DROPPED MEMBERS DECEASED 11 CLUB CANCELLED 133 OTHER 211 TOTAL 355	121 CLUBS OF 450 ADDED 1 OR MORE NEW MEMBERS	GENDER DISTRIBUTION MALE 6,402 (57.95%) FEMALE 4,644 (42.04%) NON BINARY 0 (0.00%) PREFER NOT TO ANSWER 1 (0.01%)
	CLICK HERE FOR CUMULATIVE MEMBERSHIP DATA	TOTAL FAMILY UNIT MEMBERS 863 FAMILY MEMBERS PAYING HALF DUES 490